

Sept. 14-1920 -

Wm Sewell  
Sec. 30. T. 6. N. R. 1 W.

See Book K. p. 6  
Field Notes  
New Leonard Pt.

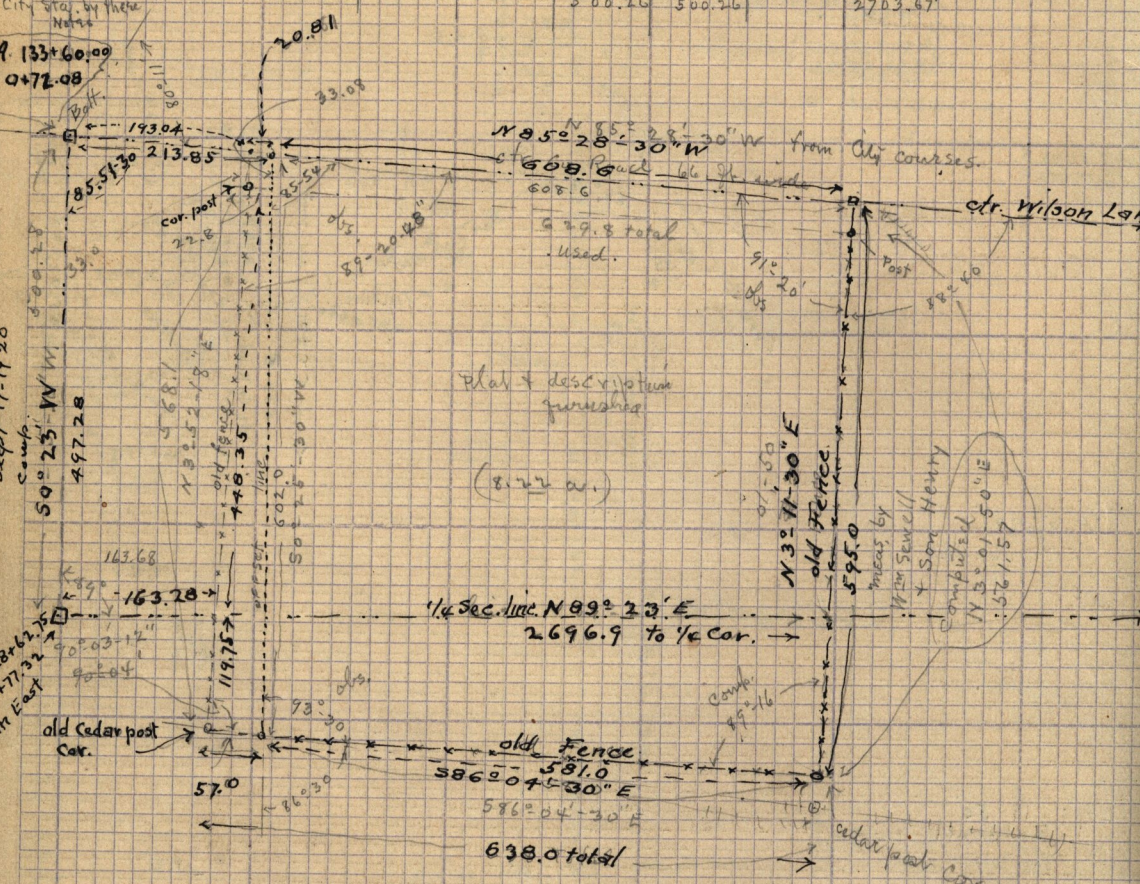
Trav. Table (3) connecting S. E. Cor. of NW 1/4 Sec. 30 with S. & W. Cor. of NW 1/4 Cor. at

| Dist    | Course          | N      | S      | E       | W       | Remarks                            |
|---------|-----------------|--------|--------|---------|---------|------------------------------------|
| 254.65  | N 1° 26' E      | 254.57 |        | 6.37    |         |                                    |
| 2708.41 | N 85° 28' 30" W | 213.67 |        |         | 2699.96 | along E. line 1/4 Ctr. Co. Road to |
| 500.28  | S 0° 25' 30" W  |        | 500.26 |         |         | 3.71 to S. W. Cor. N. W. 1/4       |
| 2697.50 | N 89° 19' 12" E | 32.02  |        | 2697.30 |         | To S. E. Cor. N. W. 1/4            |
|         |                 | 500.26 | 500.26 |         | 2703.67 |                                    |

A 133+60.00  
B 0+72.08

Sept 17-1920  
Camp  
S 0° 25' W 1/4  
497.28

A 128+22.75  
B 0+77.32  
from East



Traverse Table

|        | N      | S      | E     | W     |
|--------|--------|--------|-------|-------|
| 508.92 | 508.90 |        |       | 4.22  |
| 57.00  |        | 3.90   |       | 56.87 |
| 508.10 | 566.80 |        | 38.36 |       |
| 22.8   |        | 1.80   | 22.73 |       |
|        | 570.70 | 570.70 | 61.09 | 61.09 |

Sept 17-1920 Traverse Table No 2 - not including street - leg. at N.W. Cor. 47 tra

|        | N      | S      | E      | W      |
|--------|--------|--------|--------|--------|
| 568.1  | 566.80 |        |        | 38.36  |
| 638.0  | 43.47  |        | 636.51 |        |
| 566.57 | 560.78 |        | 29.69  |        |
| 629.8  | 45.69  |        |        | 627.84 |
|        | 610.47 | 610.47 | 666.20 | 666.20 |